



GMT MONTHLY MEMBERSHIP PROGRESS REPORT

Results as of: 5/31/2017

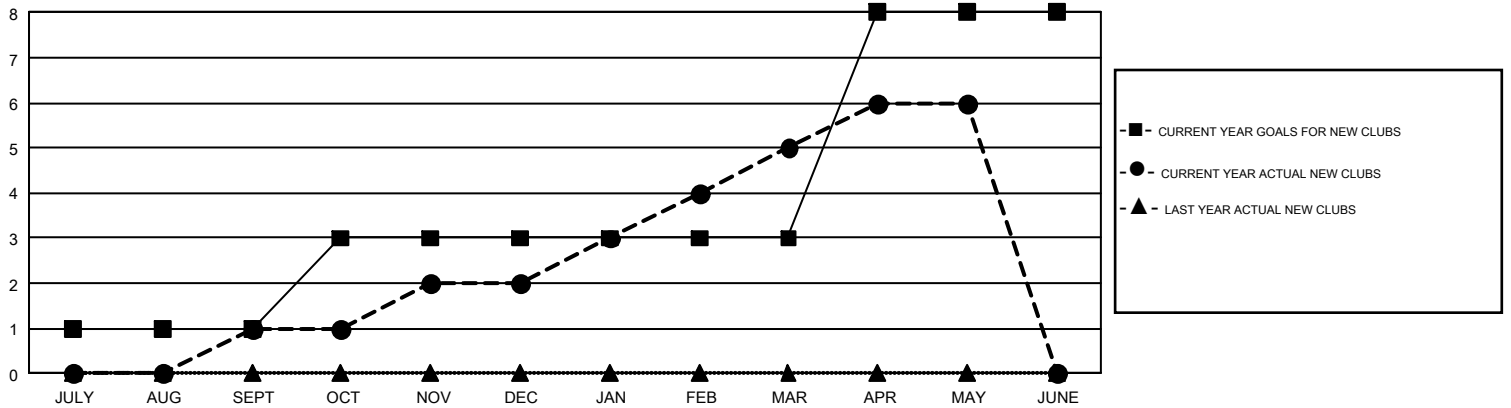
GMT Constitutional Area 6-Afr, Group G

GMT: MIKE NEWLANDS

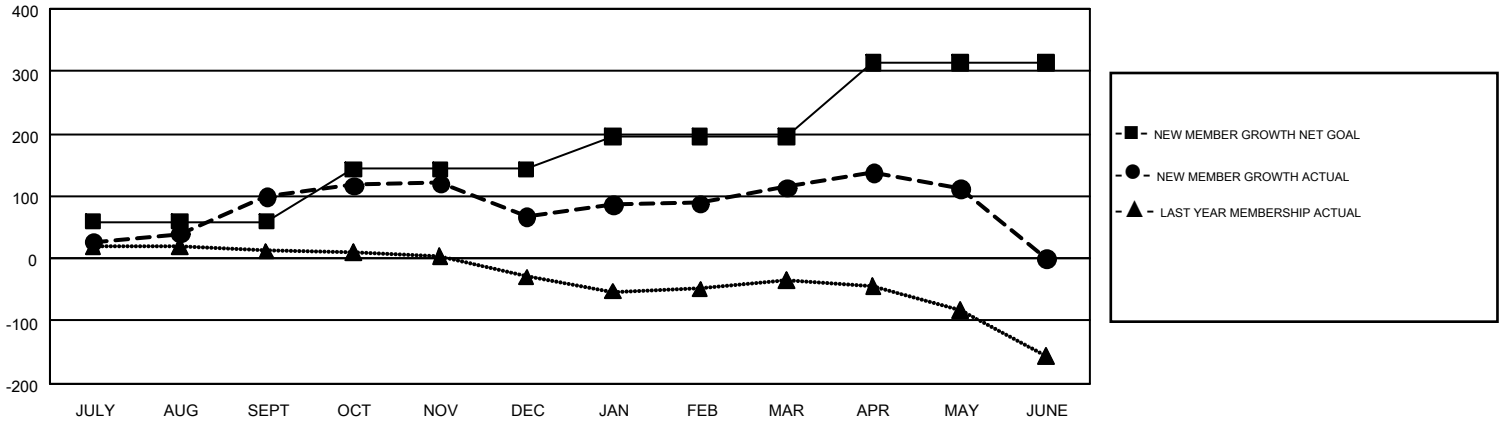
REPORT DOES NOT INCLUDE CLUBS IN UNDISTRICTED AREAS.

Clubs				Members			
RESULTS FOR 2016-2017				RESULTS FOR 2016-2017			
QUARTER	NEW CLUB GOAL	NEW CLUBS	DROPPED CLUBS	QUARTER	NEW MEMBER GROWTH NET GOAL (not reinstated or transfers)	NEW MEMBER GROWTH ACTUAL (not reinstated or transfers)	DROPPED MEMBERS ACTUAL (including transfers)
JULY/AUG/SEPT	1	1	1	JULY/AUG/SEPT	59	150	50
OCT/NOV/DEC	2	1	0	OCT/NOV/DEC	84	112	145
JAN/FEB/MAR	0	3	1	JAN/FEB/MAR	53	152	105
APR/MAY/JUNE	5	1	0	APR/MAY/JUNE	117	70	71

GOALS AND ACTUAL NEW CLUBS CUMULATIVE



GOALS AND ACTUAL MEMBERS CUMULATIVE



DROPPED CLUBS: 2	90 CLUBS OF 149 ADDED 1 OR MORE NEW MEMBERS	GENDER DISTRIBUTION
DROPPED MEMBERS		MALE 1,335 (57.47%)
DECEASED 11		FEMALE 988 (42.53%)
CLUB CANCELLED 0	CLICK HERE FOR CUMULATIVE MEMBERSHIP DATA	TOTAL FAMILY UNIT MEMBERS 641
OTHER 360		FAMILY MEMBERS PAYING HALF DUES 331
TOTAL 371		